



# Kampung Kota Bersama



## RW 01 Sunter Jaya

JANUARY 2019





## **Kampung Kota Bersama**

Cover Photo: Kids walking together on an alley in RW 01 Sunter Jaya, Jakarta.  
Cover Photo By: ITDP Indonesia

Authors: Deliani Poetriayu Siregar  
Editor: Yoga Adiwinarto  
Date of Publication: January 2019  
Photo Credits: ITDP Indonesia



Jl. Johar No. 20 5th Floor, Jakarta Pusat  
10340, Indonesia

phone +62-21-3911-923  
fax +62-21-3911-924  
[indonesia@itdp.org](mailto:indonesia@itdp.org)

## GLOSSARY

**Kampung Kota/Kampung:**

An organically established residential and mixed use inclusive communities that are often remnants of the original villages absorbed by the growing city.

**RW or Rukun Warga:**

A numbered district under the municipality. It is considered as larger neighborhood and in Jakarta, one RW means one Kampung Kota.

**RT or Rukun Tetangga:**

A numbered district under RW. One RW is included several number of RTs.

**Proklam or Program Kampung Iklim:**

A national-wide program which is led by the ministry of environment. The program encourages local communities of one kampung to do several activities as way of adaptation and mitigation of climate change.

**Metromini:**

A non-BRT bus service within the city and known with their orange-blue colored bus.

**Urun Rembuk:**

A discussion forum of multi-stakeholders which is open for everyone to deliver their opinions and/or ideas.

**Kerja Bakti:**

A scheduled voluntary work by the local communities within their neighborhood. It brings the spirit of togetherness and usually to tackle environment issues such as waste issues.

**Karang Taruna:**

A group of the local youths within the neighborhood. It is tiered group from Kelurahan to RW level.





## CONTENTS

<b>2</b>	<b>Introduction</b>
2	Kampung Kota Bersama
2	Goals
2	Pilot Project Location
3	RW 01 Sunter Jaya Profile
<b>4</b>	<b>Methods</b>
4	Steps
5	Analysis Results
6	Idea & Recommendation
6	Problems Encountered by Residents of RW 01 Sunter Jaya
7	Why It Has to Be Kampung Tourism?
<b>8</b>	<b>Strategy Details</b>
9	Traffic and Parking Limitation
11	Child-Friendly Streets
12	Walking Tour
14	Kangkungan Street Redesign
15	Intersection Management
16	Additional Public Transportation
17	Additional Street Lighting
<b>18</b>	<b>Urun Rembuk</b>
<b>19</b>	<b>Kerja Bakti</b>
<b>20</b>	<b>Alley Adoption</b>

# INTRODUCTION

## KAMPUNG KOTA BERSAMA DESCRIPTION

Kampung Kota Bersama is a program initiated by ITDP Indonesia to help organize a number of urban kampung in DKI Jakarta to be more friendly to pedestrians and cyclists. The mentoring process carried out by ITDP uses the community development method so that collaboration occurs with villagers. The involvement of mothers and children is also key to the assistance provided by ITDP. Hopefully, similar activities can be replicated in many places, both in DKI Jakarta and in the surrounding areas.

## GOALS

Encouraging the creation of kampung areas that are friendly to and prioritize pedestrians and cyclists, and increasing the use of public transportation.

## PILOT PROJECT LOCATION

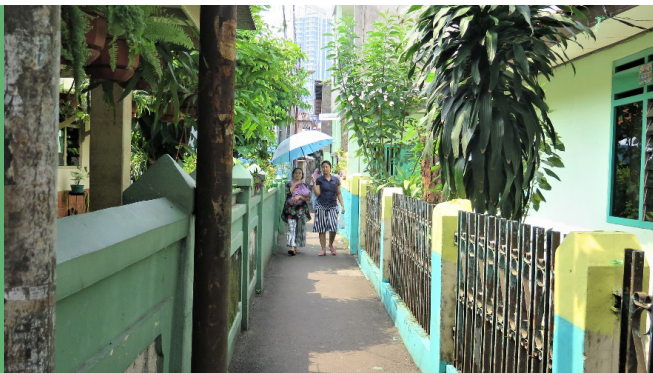
RW 01 Sunter Jaya,  
North Jakarta



RW 01 Cikini,  
Central Jakarta



RW 05  
Mampang Prapatan,  
South Jakarta



## RW 01 SUNTER JAYA PROFILE

### WHY WE CHOSE RW 01 SUNTER JAYA



RW 01 Sunter Jaya is located in Sunter Jaya Village, Tanjung Priok District, North Jakarta. The urban kampung area, which totals approximately 15.6 hectares, has a population of around 13,000, or equal to 3,000 households.

RW 01 Sunter Jaya was chosen as one of the pilot project locations because it has fulfilled the following requirements:

1. Adjacent to public transportation
2. Adjacent to pedestrian facility repair work by either the Provincial Bina Marga or the relevant official in the previous year
3. Having a potential of integration and public transportation services development

In addition to fulfilling the three requirements mentioned above, RW 01 Sunter Jaya also received an award as a National ProKlim and had citizens who were enthusiastic and willing to actively run the program together. Furthermore, it is known that residents who live in the area prefer to walk to access various facilities within the village and have the need to be served by public transportation besides Metromini U24.



# METHODS

## STEPS

### ACTIVITY METHOD



\*SDLH: Suku Dinas Lingkungan Hidup (Provincial Environmental Service)

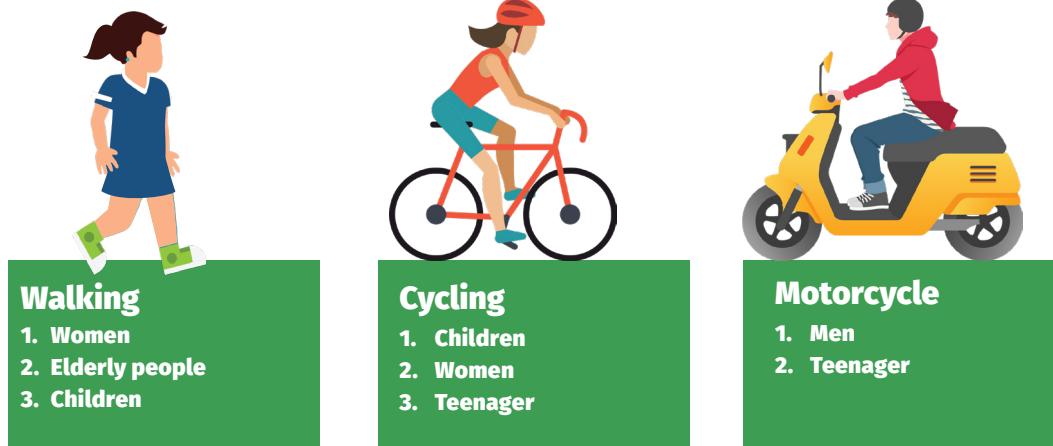
\*SDBM: Suku Dinas Bina Marga (Provincial Regional Road Service)





## ANALYSIS RESULTS

### TRANSPORTATION MODE PREFERENCE OF RW 01 SUNTER JAYA



### GENERAL PROBLEMS OF VARIOUS GROUP

- No pedestrian space on Kangkungan Street (Telaga Raya)
- Alleys and intersections are not safe, especially for children
- No bicycle facilities, such as parking or bicycle lanes
- Lack of public transport services that reach settlements
- Lack of safe interaction space for the elderly
- The need for restrictions or arrangements for trucks that cross the region
- The desire to develop the kampung as a tourist destination

### SPECIFIC PROBLEMS FACED BY MOTHERS AND CHILDREN

Inside the kampung:

Parking

Outside the kampung:

Crossways



## IDEA & RECOMMENDATION



## PROBLEMS ENCOUNTERED BY RESIDENTS OF RW 01 SUNTER JAYA

**Walking and cycling are the main choices of mobility in the RW 01 area** especially for groups of women, children, and the elderly. However, security and comfort while walking are still big issues. There are a number of other problems for pedestrians and cyclists in RW 01 Sunter Jaya, as follows:



1. The prevalence of traffic jams (motorcycles, cars, trucks), parking, street vendors, and the absence of sidewalks
2. Only 100 out of 149 total intersections (or 67%) are safe for pedestrians
3. Traffic and motorbike parking in the alley make it difficult for people to walk



4. There are not enough public transportation facilities available (only Metromini U24 is available)
5. Roads are not safe for children's activities
6. Not everyone has enough street lighting, and there are potential dangers from cables

## POTENTIALS FOR KAMPUNG TOURISM

Awardee of ProKlim  
KLHK 2016



1. The idea came up from local residents initiative (especially women)
2. The presence of community leaders
3. The existence of local institutions and high citizen awareness
4. "Rainbow kampung" title
5. Located near Lake Sunter
6. Located near Wisma Atlet



# STRATEGY DETAILS

## RW 01 SUNTER JAYA

1. Traffic and parking limitation
2. Child-friendly streets
3. Walking tour
4. Kangkungan Street redesign
5. Intersection management
6. Additional public transportation
7. Additional street lighting





# 01 TRAFFIC AND PARKING LIMITATION



To overcome the dominance of motorcycle parking spaces that take up pedestrian space, several spatial techniques and street accessories can be:

- a** Winding path can be created in the alley to slow down vehicles; the "convex" space can be filled with pots
- b** The "convex" space can also be marked as a parking space arrangement strategy
- c** Information on the vehicle access hours limitation can also be provided in several alleys
- d** Bike-sharing can be implemented

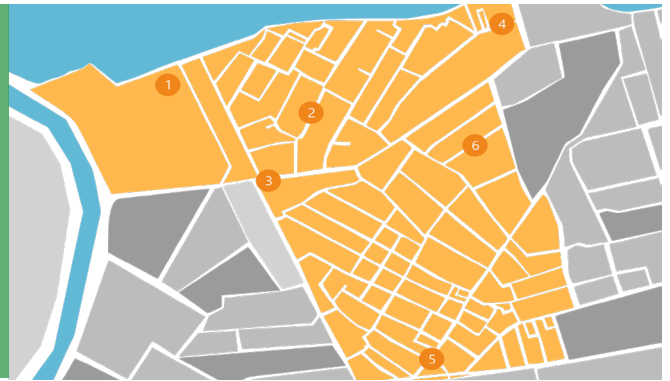


To support the creation of a more pedestrian-friendly area, the concept of bike-sharing can be applied in the area. The goal is to make motorized vehicle users switch to this service.

## SPATIAL PLAN FOR BICYCLE SPOTS

Bicycle station points are planned to be located in 10 spots and there are 6 existing spots as shown on the map

The locations are in high activity areas for residents, such as RPTRA (Child-friendly park and open public space), minimarket, traditional market, and other public spaces



Existing empty space proposed to be a bicycle station point

**BEFORE**



Proposed design of the bicycle station point

**AFTER**



## NEXT STEPS TO BE TAKEN WITH THE LOCAL COMMUNITY

1. Agreeing on which roads must be restricted to non-residents vehicles
2. Agreeing on which roads will be applied with the chicane model
3. Agreeing on the allowed parking time outside the provided convex space
4. Choosing the “terminal” space and/or point of the bike-share



## 02 CHILD-FRIENDLY STREETS



Aiming to overcome the lack of safe interaction space for children, the elderly, and people with disabilities, the strategy is to change several alleys that are usually used by vehicles into spaces for public activity. Some of the possible transformations are:

1. A number of small roads will be specifically designed to accommodate the activities of children, the elderly, and people with disabilities.
2. The alley can be closed for motorized vehicles on an hourly arrangement of allowed activities, according to the children's activity hours.
3. Installations that are suitable for children, the elderly, and people with disabilities can be applied or installed in the alley.



## 03 WALKING TOUR

**The Walking Tour** is designed to accelerate changes in the environment to be more pedestrian and bicycle friendly. This method not only encourages change in the environment but also supports efforts to develop the strength that the village environment has. To support walking tours, there are several activities that can be done, namely:

1. Design the walking tour routes
2. Story wall mural
3. Map of the area mural
4. Route signs to guide cyclists and pedestrians to the tourist sites
5. Training for local guides

### Point of Interest:

- TransJakarta Bus Stop
- Lake Agung
- Balai Warga
- RPTRA (Open Public Space)
- Historical Story Wall
- Waste Bank
- Healthy House
- Pak Tarno's House
- Composter Alley
- White Field



The historical story of how RW 01 Sunter Jaya became the ProKlim Village will be divided into 3-4 story sections, which will be depicted at 3-4 wall points, as illustrated on the map above.

Example of the historical story mural





We also propose **8 locations** for area map murals that will not only support walking tours but also guide residents or guests who are not participating in the walking tours.

Training for local young residents to be tour guides, so they can hold the tour by themselves, therefore increasing the walking tour frequency. In this event we collaborated with the Jakarta Good Guide team who are certified guides from the DKI Jakarta Tourism Board.



## WALKING TOUR DETAILS

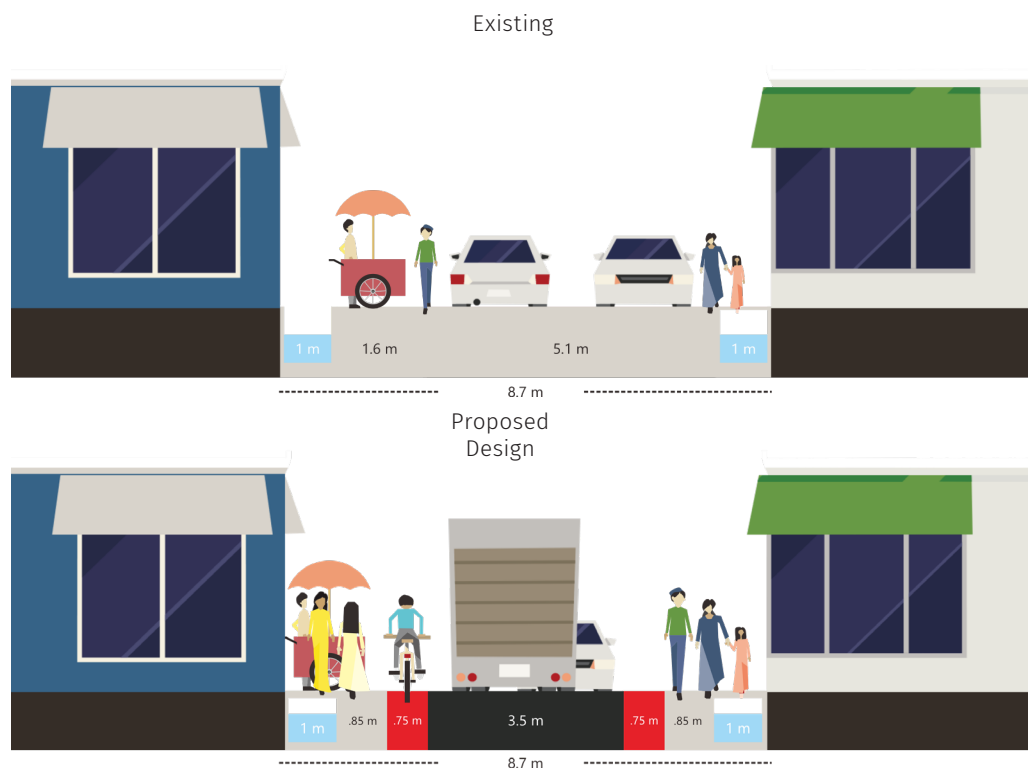
1. Tour is conducted on Saturday/Sunday \*with scheduling
2. Morning: 09.00-11.00  
Afternoon: 3:00 p.m. to 5:00 p.m.
3. Tour participants register and are assigned a special number that shows the tour guide they have paid for that particular tour
4. The cost of the tour: Rp. 100 000 (bicycle rental, megono rice, pletok beer, souvenirs, and plant package)
5. The tour also includes a short class about urban farming at Pak Tarno's house
6. After the tour is finished, a joint meal will be held at White Square (participants can buy local souvenirs)
7. The tour also welcomes ProKlim guests (they do not need to register, but they need to let tour organizers know they are coming)

### Further Steps with The Local Residents:

1. Preparing local culinary and/or signature products.
2. Gathering young residents who are interested in being tour guides
3. Accompanying local residents to form a tourism organization

## 04 KANGKUNGAN STREET REDESIGN

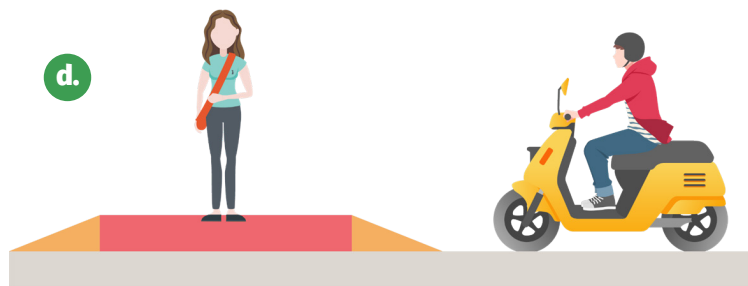
The redesign aims to add pedestrian space while representing how to prioritize pedestrian space that is safe, comfortable, and enjoyable. By redesigning several points on **Jalan Telaga Raya (Kangkungan)**, it will support the effort to reduce vehicles speed and make pedestrians safer when crossing the road:



- a. Adding road marks and/or marking the vehicle space that is equal to 3.5m to slow down their speed while driving in the street
- b. A 0.75m-wide space on either side of the vehicle space, which would only be used by vehicles when traffic volumes are high. During low traffic, the space can be used by pedestrians and cyclists.
- c. Closed drainage and removal of plant pots from the walkway to make an additional space for pedestrians (total 1.85-2.6m).
- d. Variation space, which would be prioritized for pedestrians, but could also be utilised for other activities such as street vendors, as long as agreed upon (maximum 1.2m).

## 05 INTERSECTION MANAGEMENT

To overcome the local challenge of creating a safe intersections, a new intersection arrangement has to be created. By doing this, we are also expecting to control the speed of vehicles crossing the intersection.



- a.** The most plausible solution is to add a speed bump at the start of the intersection
- b.** To beautify and increase the safety of strategy (a), we can color the intersection
- c.** Convex mirrors could be installed to minimize the accident risk at the intersection
- d.** Proper raised crossings could be installed



## 06 ADDITIONAL PUBLIC TRANSPORTATION

Responding local resident's requests (especially from mothers and teens) for more public transportation services, we recommend integrating service routes, such as TransJakarta and Metromini, accompanied by technical improvements or the addition of other supporting facilities.

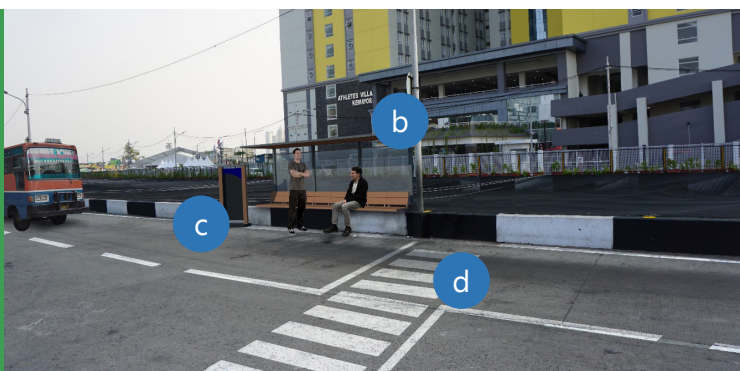
Recommendations for additional public transportation services (e.g. TransJakarta)



a. No-stopping sign replacement



b. Portable bus stop  
c. Wayfinding  
d. Zebra cross



Adding zebra cross





## 07 ADDITIONAL LIGHTING

Recommendations for the addition or improvement of street lighting need to be discussed again, with the involvement of other stakeholders besides local residents.



# URUN REMBUK



On Sunday, October 21, 2018, ITDP Indonesia along with local residents held an activity called “Urun Rembuk”, inviting approximately 100 representatives from various groups. Activities were carried out in the form of field surveys per group, who were joined by representatives of each RT from RT01-RT24. In addition to the RT representatives, the Karang Taruna, PKK, and “youth taklim” representatives were also present. The activities carried out were not only taking pictures of alleys, but also conducting a survey to ensure the walking tour routes, as well as measuring the width and length of the alleys. After the survey, group discussions were conducted, where each RT described the desired design and the budget needed to make improvements.





# KERJA BAKTI

Together with local residents, ITDP and volunteers draw patterns and paint spaces for parking, reforestation, and social spaces for residents



Following the Urun Rembuk activity on Sunday, 28 October, 2018, residents together with ITDP and village volunteers conducted a collective workshop or "Kerja Bakti". There were 4 RT locations arranged according to what had been proposed, namely RT 09, 12, 15, and 19. The walking tour team, which mostly consisted of young residents from Karang Taruna, helped and reviewed the process, and drew murals on several alleys.





# ALLEY ADOPTION

## RT 01

### **Theme: Child-Friendly Alley**

The types of activities to be carried out are as follows:

- a. Adding a game installation
- b. Painting the alley ground
- c. Painting the walls with murals of children's games

**Total amount needed for repairs: Rp. 4 000 000**

## RT 03

### **Theme: Child-Friendly Alley**

The types of activities to be carried out are as follows:

- a. Adding a game installation
- b. Painting the alley ground
- c. Painting the walls with murals of children's games

**Total amount needed for repairs: Rp. 6 470 000**

## RT 04

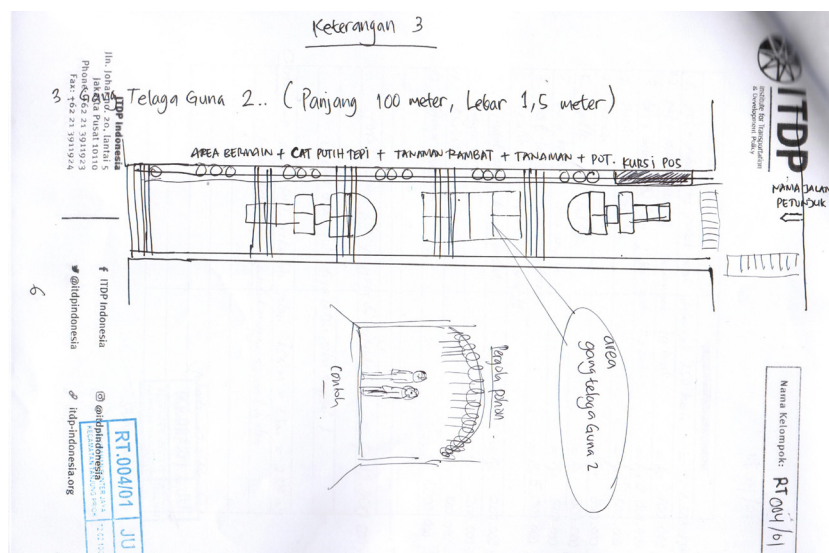
### **Theme: Child-Friendly Alley**

The types of activities to be carried out are as follows:

- a. Installing a speed bump to slow down vehicles at the end of alleys
- b. Adding road signs in the alley
- c. Painting the ground with children's games
- d. Installing shades in the alley using pergola and vines
- e. Adding more space for seating and/or social interaction
- f. Painting walls with mural themes
- g. Closing the drain hole
- h. Creating a water reservoir for evacuation of fire events
- i. Adding road markers

**Total amount needed for repairs: Rp. 11 130 000**

### Child-Friendly Alley



### Theme: Parking Management

- Adding more lighting
- Adding road signs in the alley
- Painting the alley ground to mark parking space
- Adding more plants to make a winding road space

**Total amount needed for repairs: Rp. 1 255 000**

## RT 07

### **Theme: Child-Friendly Alley**

The types of activities to be carried out are as follows:

- a. Adding shades to an alley in the form of a hanging umbrella installation
- b. Painting the street space for various children's games
- c. Painting mural walls
- d. Closing 3/4 of road space

**Total amount needed for repairs: Rp. 2 725 000**

## RT 08

### **Theme: Parking Management**

The types of activities to be carried out are as follows:

- a. Adding shades to an alley in the form of a hanging umbrella installation
- b. Painting the street space for various children's games
- c. Painting mural walls
- d. Closing 3/4 of road space

**Total amount needed for repairs: Rp 2 725 000**

## RT 09

### **Theme: Child-Friendly Alley**

The types of activities to be carried out are as follows:

- a. Creating a plant arrangement
- b. Arranging the drum composter
- c. Painting the alley ground for children games
- d. Painting priority signs

**Total amount needed for repairs: Rp. 1 250 000**

## RT 10

### **Theme: Child-Friendly Alley**

The types of activities to be carried out are as follows:

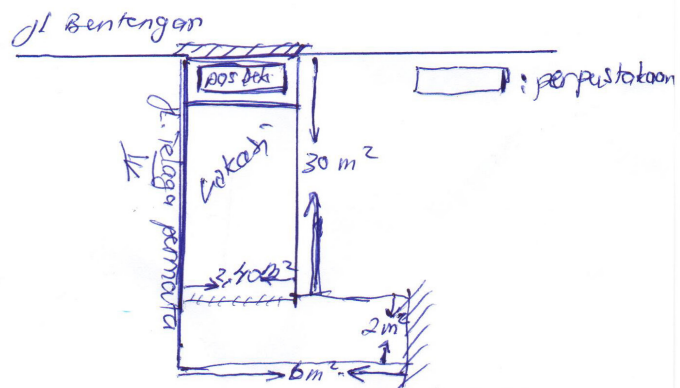
- a. Adding shades to an alley in the form of a hanging umbrella installation
- b. Painting the street space for various children's games
- c. Adding information signs for children's activities in the alley

**Total amount needed for repairs: Rp. 2 165 000**



Lingkungan Ramah anak  
RT 10/01

1. Taman Bermain
2. Tempat Belajar / Perpustakaan
3. Lahan parkir Sepeda / motor.
4. Tempat pertemuan warga



Bahan pendukung yg di butuhkan.

1. Cat tembok warna putih 25 kg.
2. - - - kuning 5 kg
3. - - - hijau 5 kg
4. - - - merah 5 kg.
5. ~~Tempat~~ tenda pelindung panas / payung 60 pcs.
6. Tali Tambang 1 rnts.
7. Buku Bacaan anak 2 20 pcs.

## RT 11

### Theme: Child-Friendly Alley

The types of activities to be carried out are as follows:

- a. Painting walls with murals
- b. Painting road space for children's games
- c. Adding wall accessories with patchwork
- d. Adding lights for nighttime activities
- e. Adding road markings
- f. Adding priority signs

Total amount needed for repairs: Rp. 3 360 000

## RT 12

### **Theme: Child-Friendly Alley**

The types of activities to be carried out are as follows:

- a. Adding road markings
- b. Painting mural walls
- c. Adding portable games
- d. Adding bamboo accents to rough walls
- e. Covering the water channel for additional walking space

**Total amount needed for repairs: Rp. 2 180 000**

## RT 13

### **Theme: Child-Friendly Alley**

The types of activities to be carried out are as follows:

- a. Adding signs for alley markers
- b. Painting the street space for various children's games
- c. Adding road bumps at the end of the alley way
- d. Adding lights for nighttime activities
- e. Adding alley closure markers
- f. Adding more plants

**Total amount needed for repairs: Rp. 4 460 000**

## RT 14

### **Theme : Child-Friendly Alley**

The types of activities to be carried out are as follows:

- a. Adding lights for nighttime activities
- b. Painting the street space for various children's games
- c. Adding information signs for children's activities in the alley
- d. Painting mural walls

**Total amount needed for repairs: Rp. 2 300 000**

## RT 15

### **Theme: Child-Friendly Alley**

The types of activities to be carried out are as follows:

- a. Adding installations of children's games
- b. Flattening the surface of the alley
- c. Drawing a child's play room on the alley way
- d. Adding priority signs
- e. Adding greening plants

**Total amount needed for repairs: Rp. 1 732 000**

## RT 16

### **Theme: Parking Management**

The types of activities to be carried out are as follows:

- a. Providing space markers that may be used for parking
- b. Covering the drainage to enable the surface to be used for walking
- c. Adding trash bins
- d. Drawing on alley road space 3D images, to slow down vehicle's speed

**Total amount needed for repairs: Rp. 2 950 000**

## RT 17

### **Theme: Child-Friendly Alley**

The types of activities to be carried out are as follows:

- a. Adding shades to the alley in the form of vines and pergolas
- b. Adding more plants
- c. Adding priority signs
- d. Painting street space with a variety of children's games

**Total amount needed for repairs: Rp. 7 143 000**



## RT 18

### Theme: Child-Friendly Alley

The types of activities to be carried out are as follows:

- Adding a reading space in the alley
- Painting the street space for various children's games
- Adding an installation for badminton sport activities in the alley
- Installing information signs for children's activities in the alley
- Adding more plants
- Adding a portable road cover

Total amount needed for repairs: Rp. 7 013 000

## RT 19

### Theme: Child- and Elderly-Friendly Alley

The types of activities to be carried out are as follows:

- Smoothing the surface of the alley wall
- Adding shades by installing vines
- Adding railings for people undergoing walking therapy
- Adding priority signs
- Installing road closure signs
- Installing children's games
- Painting walls with chalkboard paint
- Adding therapy stones for elderly residents
- Adding more plants

Total amount needed for repairs: Rp. 14 605 000

#### RT 19/01 Alley Child and Elderly Friendly

##### KETERANGAN

① ATAP DITUTUP DENGAN KAWAT JARING UNTUK PENCIJAJAN.

② TAMAN BERNYAWAN BERUPA

A. AYUNAN ANAK

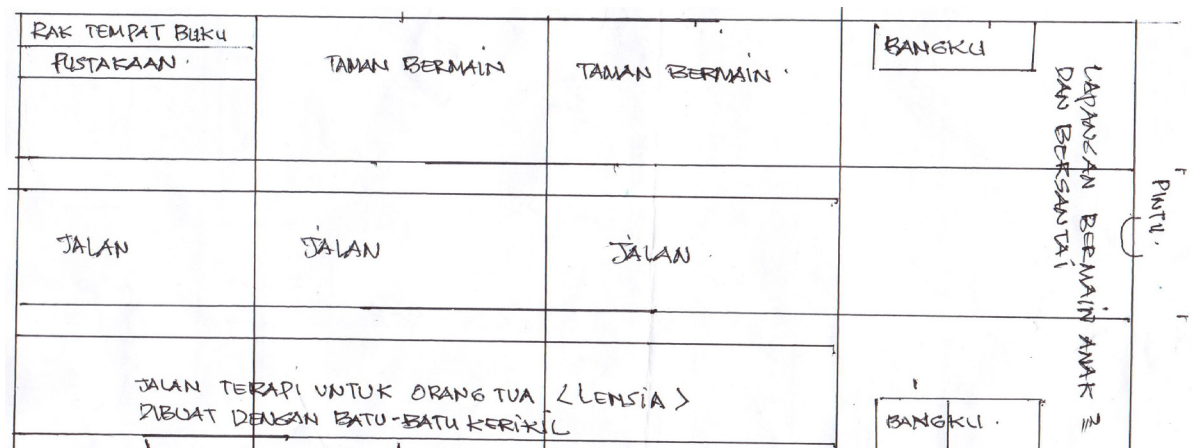
B. PEROSOTAN ANAK

C. ENJOTAN ANAK

③ JALAN UNTUK TERAPI ORANG TUA LANSIA DIBUAT DENGAN BATU BATU KERIKIL.

④ TEMBOK DIHIAS DENGAN DEKORASI DAN LUKISAN.

⑤ TAMAN BACA BUKU DAN BERSANTAI



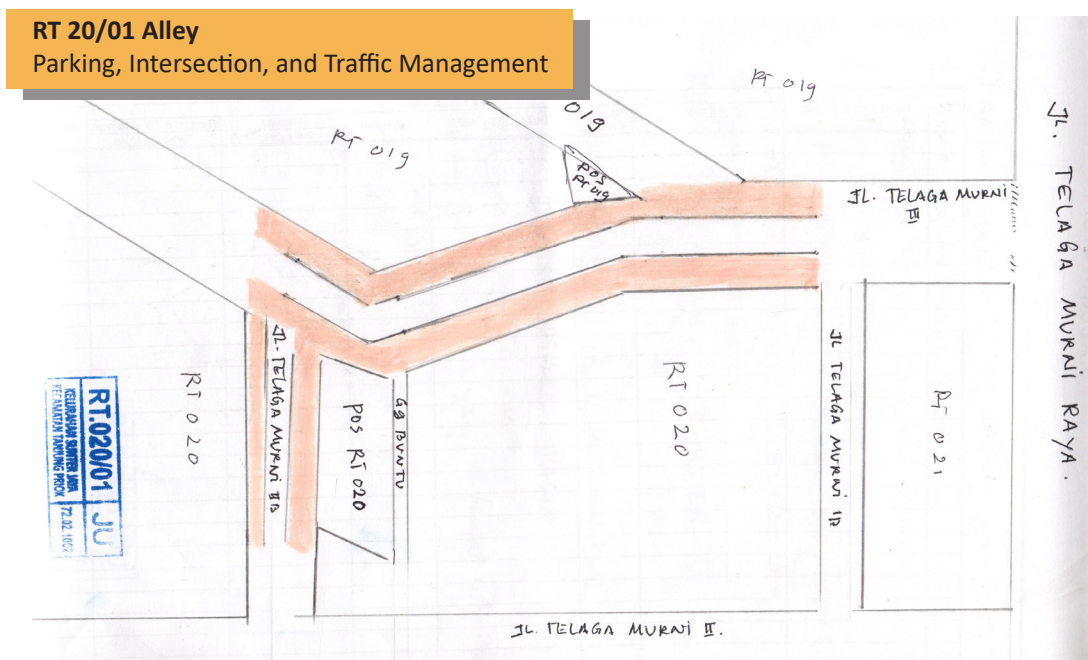
## RT 20

### **Theme: Parking, Intersection and Traffic Management**

The types of activities to be carried out are as follows:

- Painting the allowed space for parking
- Adding speed bumps at the intersection
- Painting the road space to slow down vehicle speed
- Adding priority signs
- Adding more plants

**Total amount needed for repairs: Rp. 2 107 000**



## RT 21

**Theme: Parking Management and Neighborhood-Friendly Space**

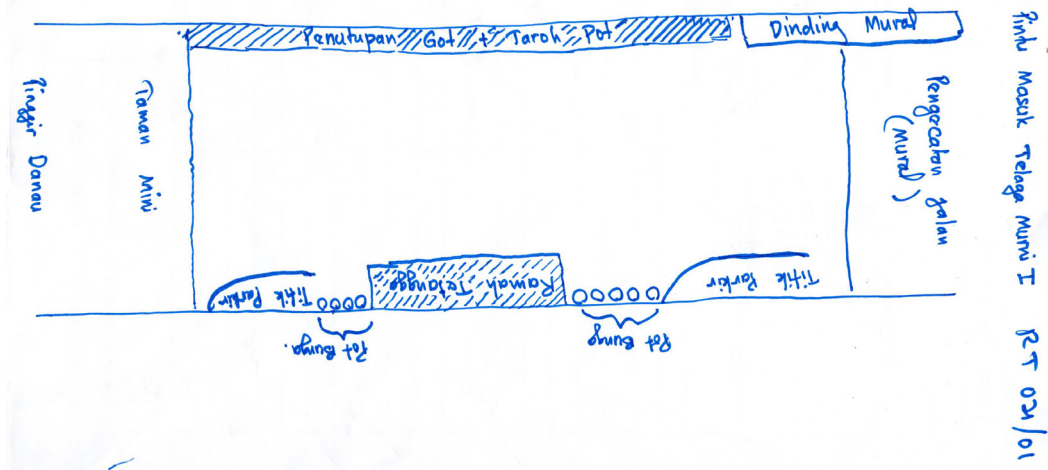
The types of activities to be carried out are as follows:

- Painting the space that can be used for parking
- Painting the space that can be used as a green space
- Painting the space that can be used as a social space for local residents
- Painting murals on street space
- Adding priority signs
- Adding a resident information board
- Smoothing the wall
- Adding a mural to the wall
- Installing signs to prohibit parking outside the yellow box
- Adding hanging plants to green spaces
- Adding pots to deflect road space and prevent careless parking

**Total amount needed for repairs: Rp. 4 768 000**

### RT 21/01 Alley

#### Parking Management and Neighborhood-Friendly Space



## RT 23

### Theme : Parking Management and Greening of Neighbors Friendly Space

The type of activities to be carried out are as follows:

- Installing additional lights for nighttime activities
- Painting mural walls
- Smoothing the wall surface
- Adding more plants
- Installing therapeutic stones at a number of points for the elderly
- Painting the road space that can be used for parking
- Adding trash bins

**Total amount needed for repairs: Rp. 9 236 000**

## RT 24

### Theme: Parking Management and Neighborhood-Friendly Space

The types of activities to be carried out are as follows:

- Smoothing the wall surface
- Adding a mural to the wall
- Painting the space that can be used for parking
- Adding a stone therapy installation for elderly residents
- Adding priority signs
- Installing an information board for alley space and hours of activity
- Installing a speed bump
- Painting the road for intersections
- Adding greening plants
- Repairing drainage

**Total amount needed for repairs: Rp. 6 910 000**



## Parking Management, Intersection, and Child Friendly Space



**Total amount needed for repairs: Rp. 8 420 000**





# CONTACT PERSONS

## COMMUNICATIONS MANAGER

Fani Rachmita

+62 812 8623 7694

[fani.rachmita@itdp.org](mailto:fani.rachmita@itdp.org)

## URBAN PLANNING ASSOCIATE

Deliani Siregar

+62 812 8236 5825

[deliani.siregar@itdp.org](mailto:deliani.siregar@itdp.org)

## ITDP INDONESIA

Jalan Johar No. 20

Jakarta Pusat 10340

Phone: 021-3911-923

Fax: 021-3911-924

[indonesia@itdp.org](mailto:indonesia@itdp.org)





[www.itdp-indonesia.org](http://www.itdp-indonesia.org)