


Low-Cost, High-Impact: Taming Traffic by Reallocating Road Space to People



Taming Traffic

Webinar Series

 @ITDP_HQ

 @ITDP.org

#TamingTraffic



Institute for Transportation
& Development Policy



Taming Traffic

Strategies to reduce driving
and promote sustainable
transportation in cities

Dana Yanocha
ITDP Webinar | April 2021

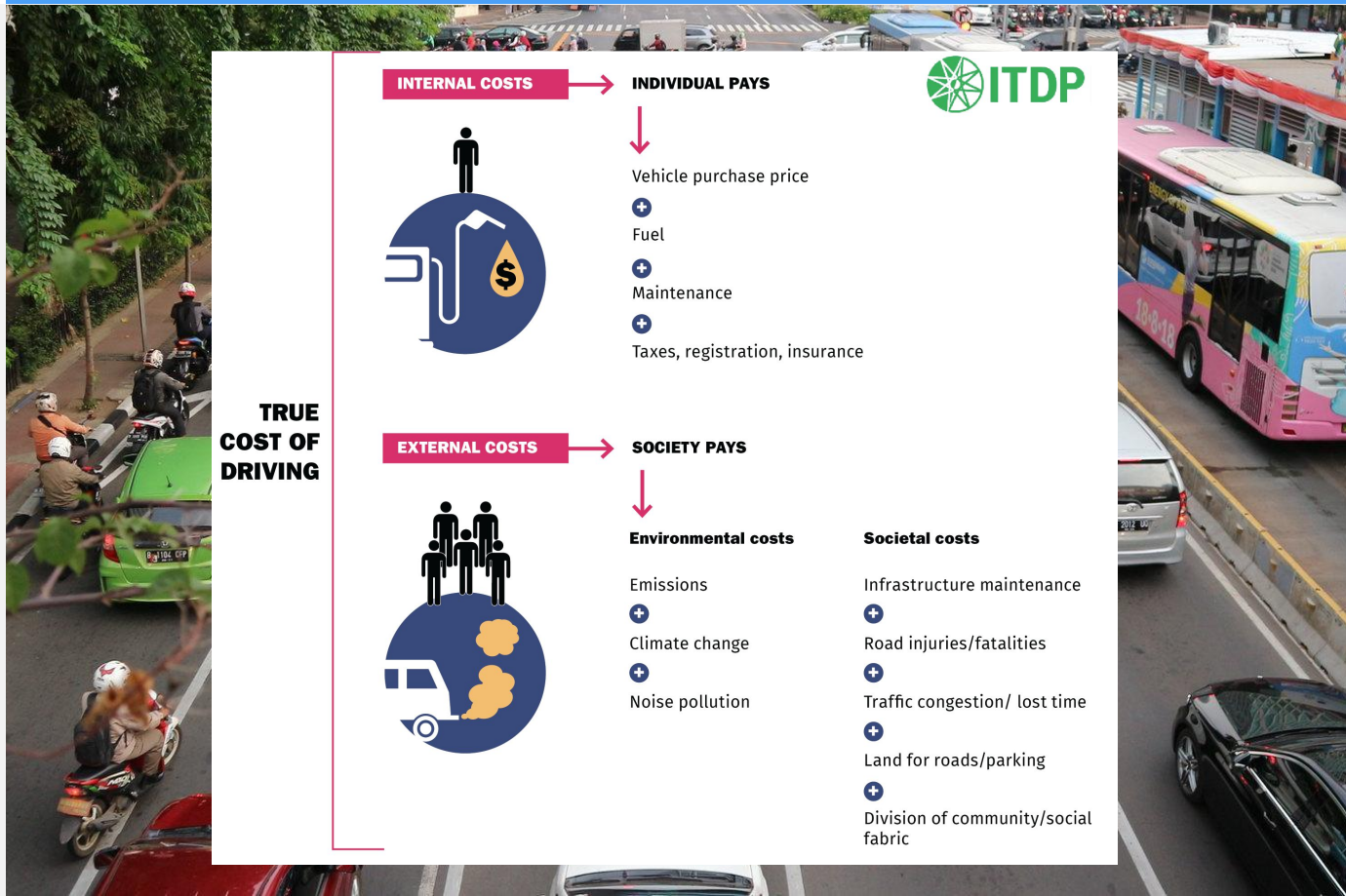
Concern about
poor local air
quality

Reduce private
vehicle mode
share

Generate
revenue



Building more
roads \neq less
traffic



Car control - TDM

PUSH

PRICE DRIVING TO REFLECT ITS TRUE COST

- Congestion pricing
- Low emission zones
- On-and off-street parking pricing
- Parking maximums
- Fuel taxes
- Vehicle registration fees/quotas
- Toll roads

PUSH & PULL

- Reallocate road space for people
- Limited traffic zones
- Transit-oriented development
- Traffic bans (e.g.: odd/even license plate schemes)

PULL

IMPROVE SUSTAINABLE TRANSPORT, SERVICE AND AFFORDABILITY

- Improve public transit frequency, reliability
- Improve walking and cycling facilities
- Shared micromobility
- Carshare
- Multimodal integration
- Transit-only lanes
- Commuter benefits for transit, cycling & walking

OFF-PEAK TRIP PRIORITY/TRIP AVOIDANCE

- Flexible working hours
- Work from home
- Teleservices (grocery delivery, telemedicine)
- Off-peak transit fare discount

OPTIMIZE STREET NETWORKS OR VEHICLE OCCUPANCY

- High occupancy toll (HOT) lanes
- High occupancy vehicle (HOV) lanes
- Carpool/vanpool/employer shuttles
- Rideshare/shared taxi
- Intelligent transportation systems (ITS), rerouting tools



What can cities do to tame traffic?

TAMING TRAFFIC

Prioritizing people over cars makes streets calmer, cleaner, and safer for all.



Taming Traffic - strategy evaluation



Reduce traffic + improve well-being

- Reduce VKT
- More trips by sustainable modes
- Cleaner vehicles
- Revenue generation



Advance sustainable transport goals

- Improve access
- Maintain safety
- Protect environment and health
- Efficient use of resources + space



Consider capacity needs

- Privacy concerns
- Political complexity
- Technological needs
- Capital needs

TAMING TRAFFIC

Key Takeaways

1



Implementing multiple traffic reduction strategies together maximizes impact and reduces potential challenges related to political will and equity.

2



Reallocating road space for people over cars should be considered as part of a comprehensive traffic reduction strategy, especially in limited capacity cities.

3



The presence of alternative transportation options is critical, particularly when most or all private vehicles are restricted from a zone.

4



If capacity is limited, adoption of traffic reduction strategies could follow a progression, starting with low-cost, low-technology options and working toward more robust, complex strategies.

Taming Traffic report available now!



www.itdp.org/tamingtraffic

- Full report
- Executive summary
- Infographic

Taming Traffic webinar series

#1 | Road space
reallocation - **TODAY!**

#2 | Parking
reform

#3 | Zone-based
vehicle access
restrictions
(LEZ, CP)



::: itdp.org ::: @ITDP-HQ :::
dana.yanocha@itdp.org