



# Pedestrians First

## Tools for a Walkable City

[pedestriansfirst.itdp.org](https://pedestriansfirst.itdp.org)

### Icebreaker activity:

What's your favorite walkable place?  
What makes it walkable?  
Tell us in the Zoom chat!

D. Taylor Reich  
(they/them pronouns)  
**[taylor.reich@itdp.org](mailto:taylor.reich@itdp.org)**

1. Why walking matters
2. What is walkability?
3. How to use  
Pedestrians First



# Why walking matters



Cars + cities = traffic jams

# Why walking matters



People take up less space than cars



# Why walking matters



Walking lets people get places



# Why walking matters



Equity, Resilience, Environment, Economy, Health, Society

# Why walking matters



Cities for Babies Benefit Everyone



# Why walking matters



COVID-19 response



# Why walking matters



COVID-19 recovery + future resiliency

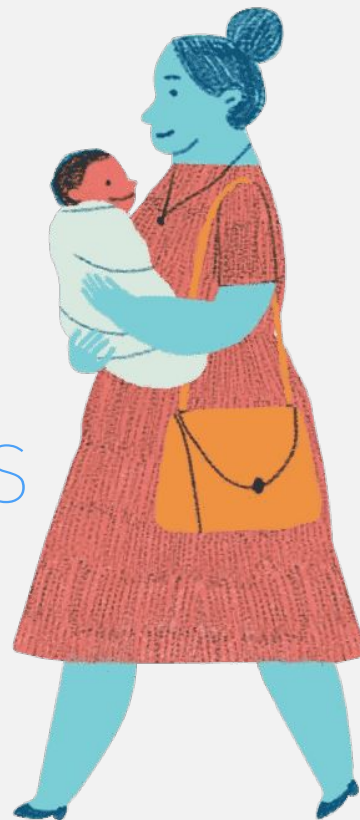
# Why walking matters

See the research for yourself:

[pedestriansfirst.itdp.org/about](https://pedestriansfirst.itdp.org/about)

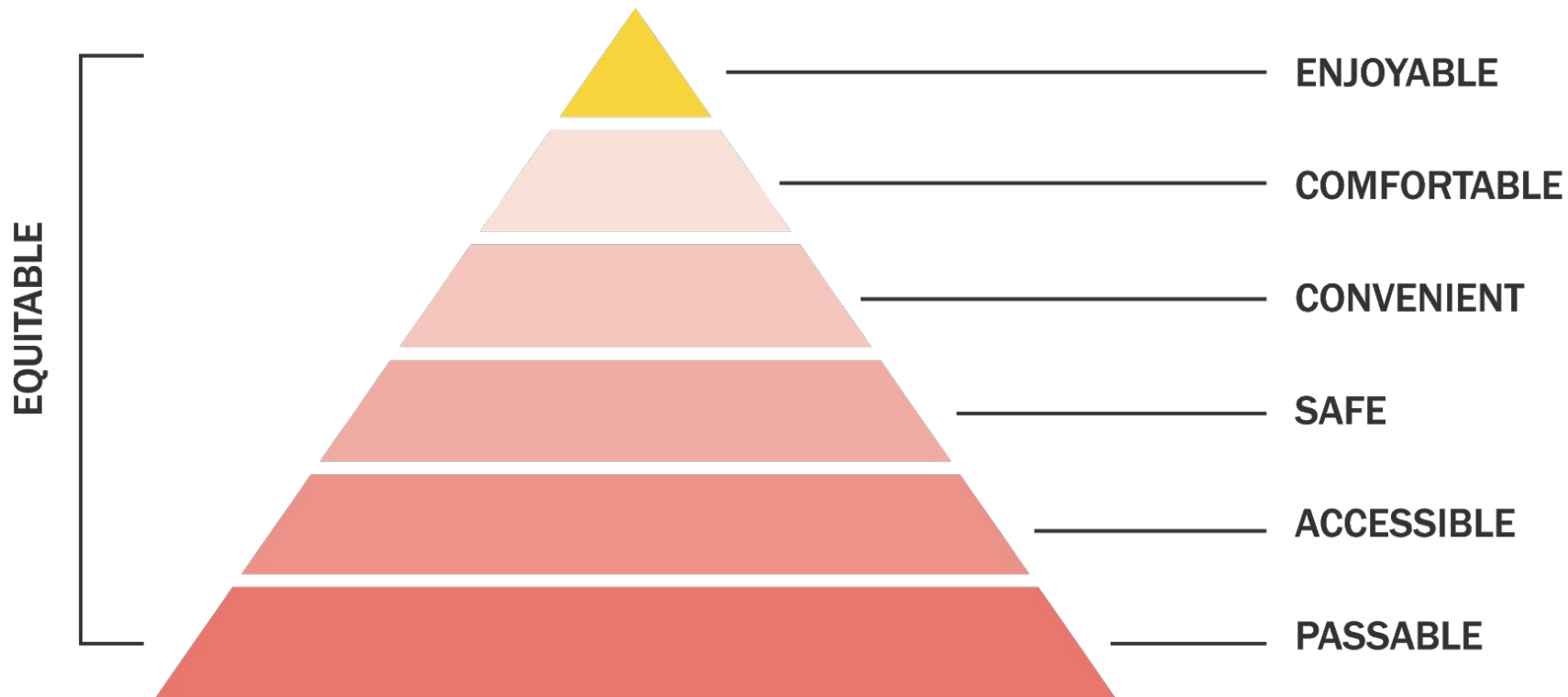
[pedestriansfirst.itdp.org/related-publications](https://pedestriansfirst.itdp.org/related-publications)

1. Why walking matters
- 2. What is walkability?**
3. How to use Pedestrians First





# What is walkability?



# What is walkability?

## New Jersey:

Footpath:

- Clear
- Wide
- Maintained

Unsafe crossing  
No destinations  
No people walking

Is this walkable?



# What is walkability?

## Addis Ababa:

Blocked footpath

Unsafe street

Many destinations

Many people walking

Is this walkable?





# What is walkability?

## Jakarta:

Dense neighborhoods  
Quiet, narrow streets  
Highways cutting  
neighborhoods off  
from each other

Is this walkable?



# What is walkability?

## Walkability:

- Street
- Neighborhood
- Transit
- City

# Why another walkability tool?

There are already many tools:

## Walkability Evaluation Tools

- ITDP Brazil (2020). Mobilidados. [Portuguese]
- ITDP. (2018). Índice de Caminhabilidade – Ferramenta 2.0 [Portuguese: Walkability Index – Tool 2.0]
- ITDP. (2017). TOD Standard. Third edition.
- ITDP. (2017). Pedestrians First: Tools for a Walkable City. First edition.
- Collectiu Punt 6. (2015). Women Working: An Urban Assessment Guide from a Gender Perspective.
- Duncan et al. (2011). Validation of Walk Score® for Estimating Neighborhood Walkability: An Analysis of Four US Metropolitan Areas.
- Centers for Disease Control. (2010). Healthier Worksite Initiative: Walkability Audit Tool.
- Krambeck, Holly, World Bank. (2006). Global Walkability Index.

See [pedestriansfirst.itdp.org/related-publications](https://pedestriansfirst.itdp.org/related-publications)



# Why another walkability tool?

Pedestrians First is:

Global • Multipurpose • User-friendly • Action-oriented

1. Why walking matters
2. What is walkability?
- 3. How to use  
Pedestrians First**



# Quick stretch break :-)





Pedestrians First  
is a **toolkit** that  
anyone can use



# How to use Pedestrians First

## Walkability:

- Street
- Neighborhood
- Transit
- City

## PEDESTRIANS FIRST



TOOLS FOR A WALKABLE CITY

**Pedestrians First measures walkability for babies, toddlers, their caregivers, and everyone in cities.**

### VIEW CITY MEASUREMENTS

See maps and measurements of walkability for cities around the world.

[About](#) [GO →](#)

### MEASURE INCLUSIVE TRANSIT

Assess the inclusivity of a transit system. Transit connects neighborhoods.

[About](#) [GO →](#)

### EXAMINE A NEIGHBORHOOD

Use indicators to measure neighborhood walkability in detail.

[About](#) [GO →](#)

### VISIT A STREET

Walk a street with a checklist of design solutions for walkability.

[About](#) [GO →](#)



# How to use Pedestrians First

## Walkability:

- **Street**

## Checklist of walkability features for a single street

- Neighborhood
- Transit
- City



Amman, Jordan

### Indicator 1: Walkways



1. Pedestrian walkways on both sides of the street are dedicated, paved, and separated from vehicles. Alternatively, the entire street is primarily for pedestrians and only rarely used by vehicles, in which case separated walkways are not needed.

☒ YES ☐ NO

2. The walkway clear paths are wide enough for the pedestrian volume. [More info](#)

☐ YES ☒ NO

3. The walkway clear path has no temporary or permanent obstructions that would prevent a wheelchair user from moving from one end of the sidewalk to the other. [More info](#)

☐ YES ☒ NO

4. The walkways are easy to use and barrier-free for people with physical challenges. [More info](#)

☐ YES ☒ NO



## VISIT A STREET

Amman, Jordan

### Indicator 1: Walkways

Walkways

2

3

4

5

6

7

8

9

Review

1. Pedestrian walkways on both sides of the street are dedicated, paved, and separated from vehicles. Alternatively, the entire street is primarily for pedestrians and only rarely used by vehicles, in which case separated walkways are not needed.

☒ YES ☐ NO

2. The walkway clear paths are wide enough for the pedestrian volume. [More info](#)

☐ YES ☒ NO

3. The walkway clear path has no temporary or permanent obstructions that would prevent a wheelchair user from moving from one end of the sidewalk to the other. [More info](#)

☐ YES ☒ NO

4. The walkways are easy to use and barrier-free for people with physical challenges. [More info](#)

☐ YES ☒ NO



# How to use Pedestrians First

## Walkability:

- Street
- Neighborhood

## Self-survey of walkability indicators

- Transit
- City

### Indicator 5: Shade and Shelter



Shade and shelter help make the walkable environment more comfortable by protecting pedestrians from heat, rain, and other elements. Relief from the weather keeps babies and toddlers comfortable. By reducing stress on pedestrians, shade and shelter are good for caregivers' mental health, helping them give more attentive care to their infants. Shaded walkways are defined as having a clear pedestrian path that is appropriately shaded during the hottest seasons. [More info](#)

#### 1. Measure complete shade and shelter in Dupont Circle

Percentage of blocks in your neighborhood that provide adequate shade and shelter elements:



Goal: 75% or more of walkway segments have adequate shade or shelter.

Reset

Submit

#### Best Practices

×



La Condesa, Mexico City,



Ipanema, Rio de Janeiro,



Souq as-Sukkar,

# How to use Pedestrians First

## Walkability:

- Street
- Neighborhood

- **Transit**

Self-survey of  
inclusivity  
indicators

- City



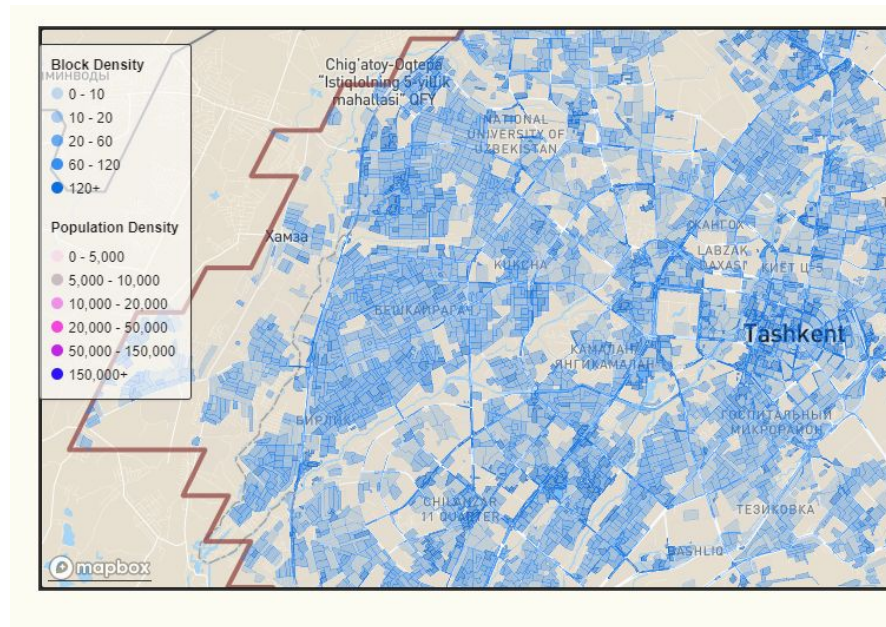


# How to use Pedestrians First

## Walkability:

- Street
- Neighborhood
- Transit
- **City**

Database of five  
walkability  
indicators and  
maps in 1,000  
cities



# How to use Pedestrians First

## Walkability:

- Street
- Neighborhood
- Transit
- **City**

Database of five  
walkability  
indicators and  
maps in 1,000  
cities

### 1: People Near Services



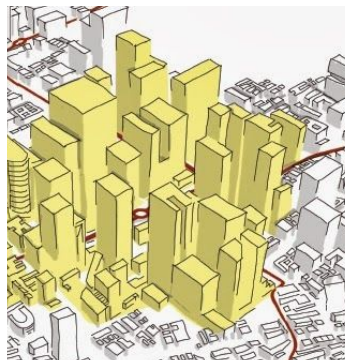
### 2: People Near Transit



### 3: Block Density



### 4: Pop. Density

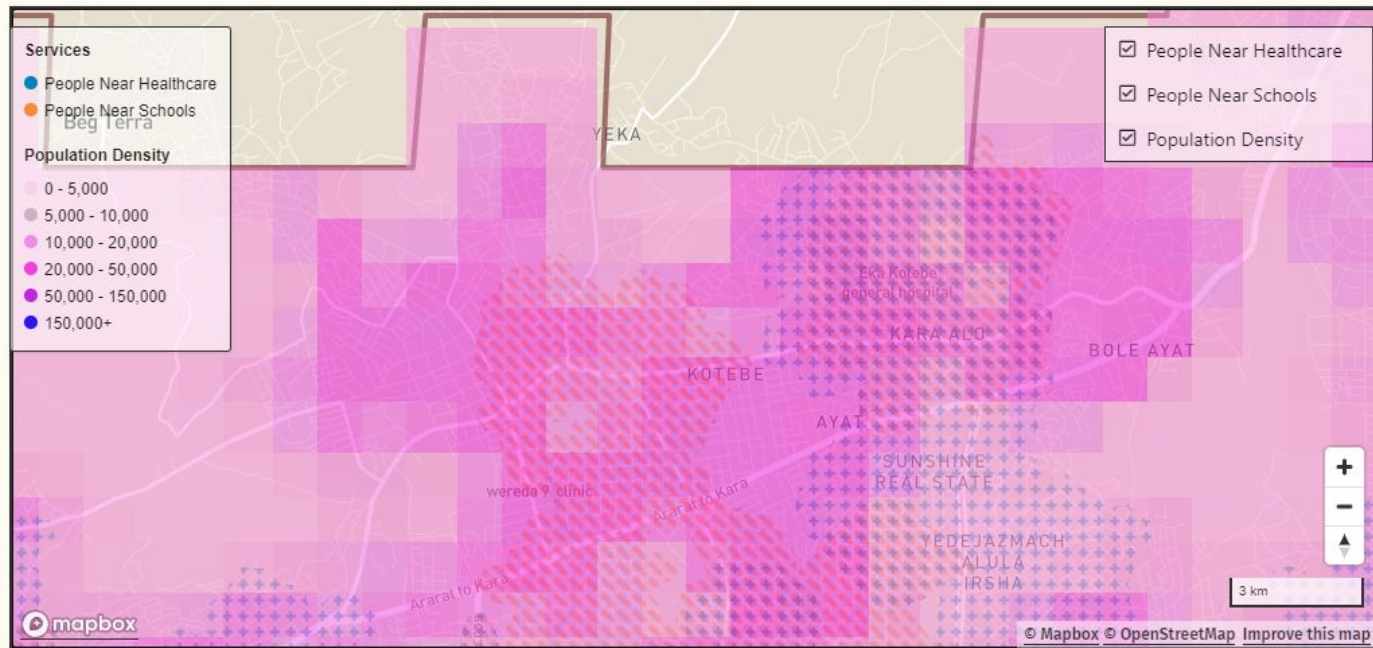


### 5: Car-Free Places



# How to use Pedestrians First

Explore:  
zoom in on  
parts of a city



People Near Services and Population Density  
in northeastern Addis Ababa



# How to use Pedestrians First

Compare:  
Contrast results  
between cities

## Walkability in Fortaleza [BRA]



PEDESTRIANS  
**FIRST**  
||||| ITDP

## Walkability in Tirane (Tirana) [ALB]



PEDESTRIANS  
**FIRST**  
||||| ITDP

# How to use Pedestrians First

Analyze:  
Download the  
maps and use  
them yourself



Share this



You can download the maps of these indicators for **Washington, D.C. [USA]**. The data is stored as .geojson files, which can be converted to other formats through a variety of tools, including [mapshaper](#). You can also download a [database](#) of cities and their indicator measurements (.csv).

The indicators are also limited by incomplete, occasionally inaccurate data from open sources, which often privileges wealthier cities that have more accurate data. Fortunately, you can help [Contribute Data](#).

We'd love to hear from you. With your feedback, we can make Pedestrians First even better. If you're using this tool for walkability planning in your city, let us know about your project. If you have any questions, comments, or criticism, we'll try to address them. [Contact us](#).

# The very technical slide!

## Population density

(Global Human Settlement Layer)

## GTFS (transit)

(OpenMobilityData.org)

## OpenStreetMap

city streets

city amenities

(schools,  
healthcare,  
car-free areas)

Python:  
OSMnx  
Geopandas  
Rasterstats

**PEDESTRIANS  
FIRST**



TOOLS FOR A WALKABLE CITY



Free and open source:  
[github.com/ITDP/PedestriansFirst](https://github.com/ITDP/PedestriansFirst)



# How to use Pedestrians First

## Walkability:

- Street
- Neighborhood
- Transit
- City

## PEDESTRIANS FIRST



TOOLS FOR A WALKABLE CITY

**Pedestrians First measures walkability for babies, toddlers, their caregivers, and everyone in cities.**

### VIEW CITY MEASUREMENTS

See maps and measurements of walkability for cities around the world.

[About](#) [GO →](#)

### MEASURE INCLUSIVE TRANSIT

Assess the inclusivity of a transit system. Transit connects neighborhoods.

[About](#) [GO →](#)

### EXAMINE A NEIGHBORHOOD

Use indicators to measure neighborhood walkability in detail.

[About](#) [GO →](#)

### VISIT A STREET

Walk a street with a checklist of design solutions for walkability.

[About](#) [GO →](#)



# How will you use Pedestrians First?

Let us know in the chat!

- ???
- ???
- ???

# Questions?

D. Taylor Reich (they/them pronouns)  
[\*\*taylor.reich@itdp.org\*\*](mailto:taylor.reich@itdp.org)





# Thank you!

I'll be sticking around for a few minutes to answer any questions you still have, or show you a demo if you want :-)

D. Taylor Reich (they/them pronouns)  
**[taylor.reich@itdp.org](mailto:taylor.reich@itdp.org)**