



Beijing Parking Reform

June 2nd, 2021

Liu Shaokun, China office

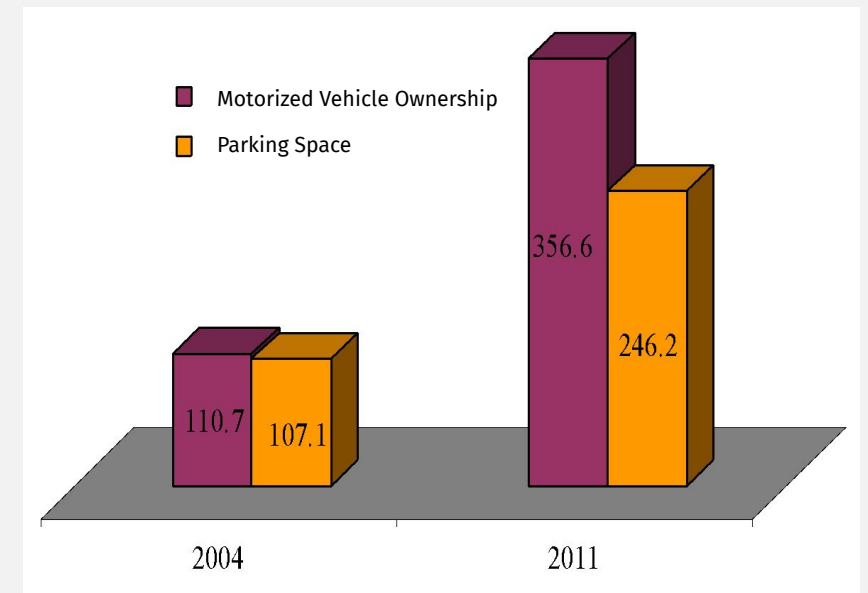
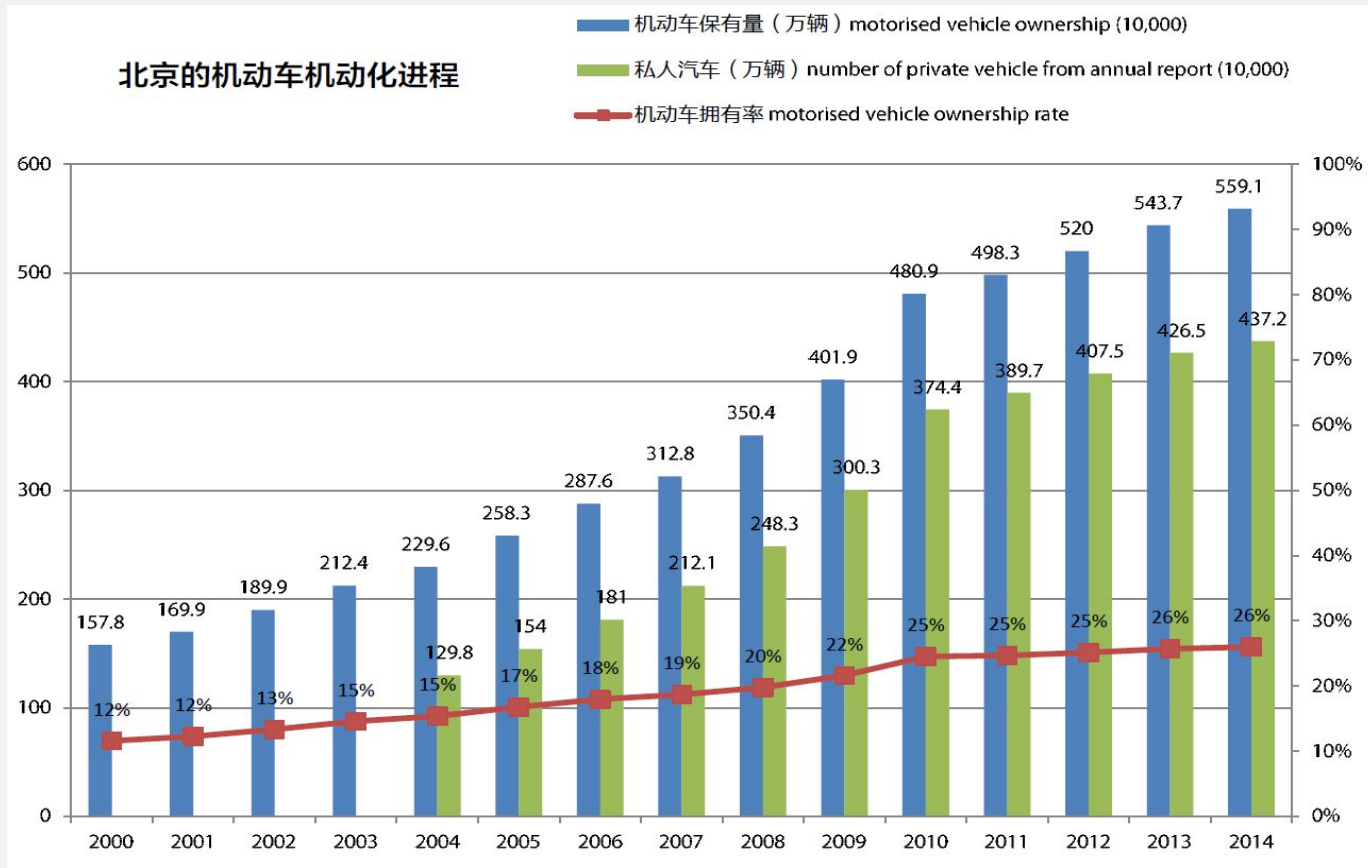
Institute for Transportation and
Development Policy

Beijing parking in 2014

Are there enough
parking spaces?



Building more parking spaces cannot solve the parking problem



Beijing parking in 2015

Here we found out who is parking and why and how long, but **the more** parking spaces were provided, **the worse** situation was getting

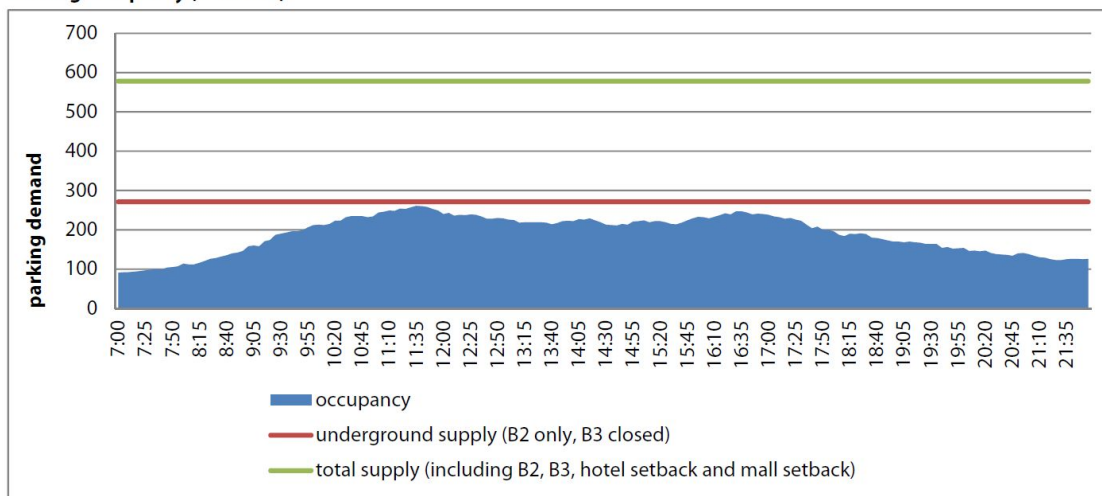


Beijing parking in 2015

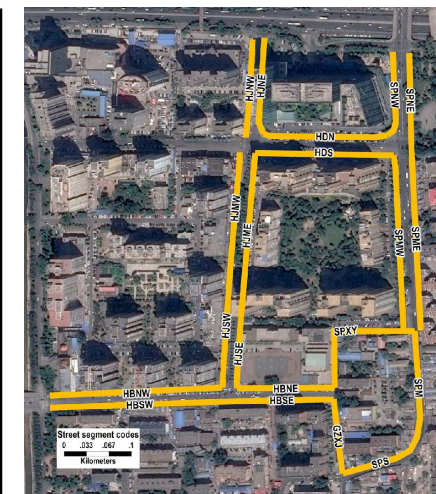
Langqin Guoji Commercial Complex



Parking occupancy (total site):



Street name	Code	On-street parking supply [spaces]	Setback parking supply [spaces]	Demand at area's max. demand time [cars]	Balance (at area's max. demand) [spaces]	Proposed on-street parking supply [spaces]	Proposed setback parking supply [spaces]	Type of parking	Balance for proposed supply (area's max. demand) [parking spaces]
Hongju Jie	HJNW	19	0	17	2	22	0	Parallel	5
Hongju Jie	HJNE	12	0	16	(4)	21	0	Parallel	5
Hongju Dong Jie	HDN	17	0	20	(3)	31	0	Parallel	11
Hongju Dong Jie	HDS	0	50	93	(43)	50	0	Parallel	(43)
Hongju Jie	HJME	19	0	13	6	29	0	Parallel	16
Hongju Jie	HJMW	20	0	19	1	25	0	Parallel	6
Shoupakou Nan Jie	SPNW	0	0	5	(5)	0	0	No parking	(5)
Shoupakou Nan Jie	SPMW	0	0	65	(65)	43	0	Parallel	(22)
Shoupakou Nan Jie	SPME	0	0	37	(37)	44	0	Parallel	7
Shoupakou Nan Jie	SPNE	0	0	5	(5)	20	0	Parallel	15
Hongju Bei Jie	HBSE	31	0	58	(27)	42	0	Perpendicular¶llel	(16)
Guang'anmen Chezhan Xi Jie	GZXX	0	26	47	(21)	0	26	Angled	(21)
Shoupakou Nan Jie	SPS	0	0	5	(5)	18	0	Parallel	13
Shoupakou Nan Jie	SPM	0	0	28	(28)	29	0	Parallel	1
Shoupakou Xi Yi Xiang	SPXY	0	0	8	(8)	0	0	No parking	(8)
Hongju Bei Jie	HBNE	51	0	60	(9)	59	0	Perpendicular	(1)
Hongju Jie	HJSW	24	0	56	(32)	35	0	Parallel	(21)
Hongju Bei Jie	HBNW	0	0	87	(87)	93	0	Perpendicular	6
Hongju Bei Jie	HBSW	0	0	104	(104)	95	0	Parallel	(9)
Hongju Jie	HJSE	24	0	37	(13)	31	0	Parallel	(6)
Total or Average		217	76	780	(487)	687	26		Total balance: 377
									Total vacancy: 310



Lacking management and enforcement **cause** the failure of parking policy

Current parking standards for new developments

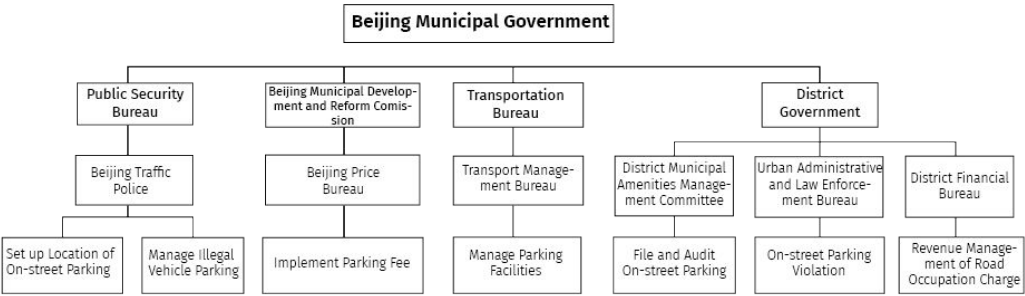
Building type			Unit	Parking standard	
				Car	Bike
Residential	Ordinary housing	Within 3 rd ring road	unit	0.3	
		Outside 3 rd ring road	unit	0.5	
	Serviced apartment		unit	1	
	Villa		unit	2	
Office			100 m ²	0.65	20
Restaurant			100 m ²	0.7	40
Retail	>10,000 m ² floor area		100 m ²	0.65	40
	<10,000 m ² floor area			0.45	40
Hotel	High-end		Room	0.6	
	Medium-end		Room	0.4	
	Low-end		Room	0.2	
Hospital	City level		100 m ²	0.65	40
	District level			0.45	40
Exhibition hall			100 m ²	0.7	45
Cinema			100 seats	3	45/1,000 m ²
Theatre (Music house)			100 seats	10	45/1,000 m ²

Source: Beijing Planning Commission (2003), Beijing area construction project planning and design guidelines

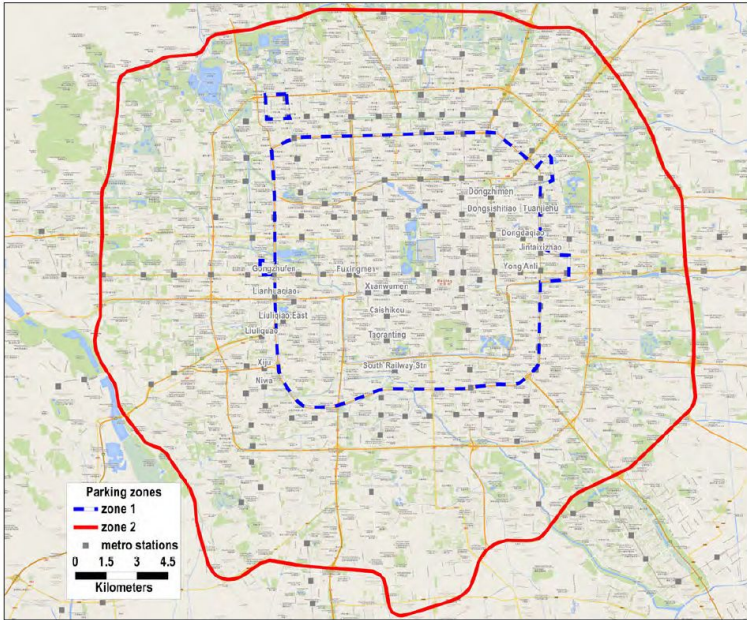
Parking price zone and price

Maximum parking prices			Parking price standard					
			Day time (7:00-21:00)				Night time (21:00-7:00)	
			On-street		Off-street		Outdoor (RMB/2hr)	Indoor (RMB/30 min)
			1 st hour (RMB/15 min)	After 1 st hour (RMB/ 15 min)	Outdoor (RMB/15 min)	Indoor (RMB/15 min)		
Non- residential area	Public hourly parking	Zone 1	2.5	3.75	2	1.5	1	2.5
		Zone 2	1.5	2.25	1.25	1.25		
		Zone 3	0.5	0.75	0.5	0.5		
	Outdoor public parking lots					<150RMB/month, 1,600RMB/year		
	Indoor public parking lots (monthly/yearly)					Market price		
	P+R					2RMB/time		
	Independently operating parking facility					Market price		
	Residential area	Outdoor parking lots hourly parking					1RMB/2hrs	
Outdoor parking lots long-term parking					<150RMB/month, 1,600RMB/year			
Indoor, hourly parking					<1RMB/30mins			
Indoor, monthly/yearly parking					Market price			

Source: Development and Reform Commission (2010), <http://www.bjpc.gov.cn/zcfg10/201106/t813591.htm>



Beijing Parking Management System in 2014



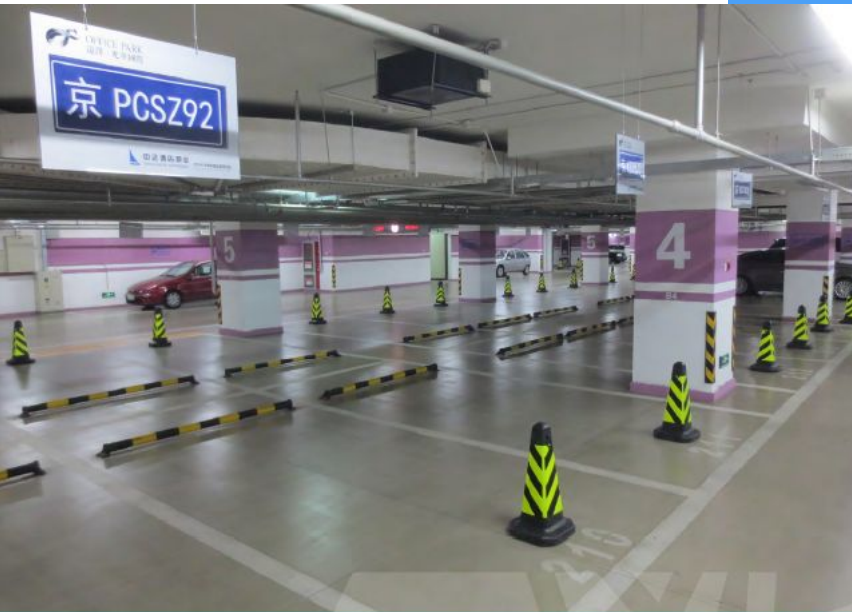
Current parking zones in Beijing

Source: based on Development and Reform Commission (2010), <http://www.bjpc.gov.cn/zcfg10/201106/t813591.htm>

Beijing parking in 2014

Lacking
management
and enforcement
cause the failure
of parking policy





Parking Guidebook for Beijing

1 March 2015



广州市现代快速公交
和可持续交通研究所
Institute for Transportation
& Development Policy



- **Institutional Changes**
- **On-street Parking Reform**
- **Maximum Parking Standard**
- **Parking Zoning**
- **Parking Price**
- **Parking Enforcement**

- 30 streets in Beijing forbade illegal on-street and setback parking
- Adding bollards to prevent car parking on sidewalks along 100 streets



The screenshot shows the official website of the Beijing Traffic Management Bureau. The header is red with the bureau's logo and name in Chinese and English. A search bar is located on the right. Below the header is a navigation menu with links to Home, Open Government, Government Services, Government Interaction, and Safe Travel. The main content area has a breadcrumb trail: 您现在的位置: 首页 > 政务公开 > 交管动态 > 工作动态. The headline reads: 交管部门启动静态停车秩序整治专项行动 130条停车管理示范大街将实行分类严管. Below this is the date and time: 时间: 2015年07月28日 字号: [大 中 小] and a print icon. The main text paragraph states: 为加强城市静态交通秩序管理, 解决群众反映强烈的交通热点问题, 按照市委、市政府的指示要求及首都公安机关“平安行动”的总体部署, 北京交管部门自即日起将在全市范围内开展静态停车秩序整治行动, 以全市130条停车管理示范大街为重点, 实行分类严管, 进一步规范静态停车秩序, 并在年底前持续推进, 确保我市道路停车秩序环境达到最佳水平. Below the text are two sub-headings: “禁停严管街”和“停车入位规范街” and 构成130条停车管理示范大街. The final paragraph details the implementation: 此次130条停车管理示范大街重点整治区域主要分为“禁停严管街”和“停车入位规范街”。其中, 确定东西长安街、鼓楼外大街、祈年大街、西直门外大街、车公庄大街等30条未施划停车泊位, 严格禁止停车的道路为“禁停严管街”; 确定体育馆路、平安大街及延长线、金融大街、前门西大街、劲松路、安定路、复兴路等100条已施划停车泊位, 需要加强规范管理的道路为“停车入位规范街”。

Beijing parking reform

Smart On-street Parking System:

- From 2019 to now
- **77,000** smart on-street parking spaces were set



Public parking standard - from minimums to maximums

Building type		Unit	Motorized Vehicle Parking Standard					
			Zone 1	Zone 2		Zone 3		Zone 4
			Max	Max	Min	Max	Min	Min
Office	Administrative	100 m ² of Floor Area	0.45	0.6	0.45	0.85	0.6	0.65
	Business		0.35	0.5	0.35	0.7	0.5	0.65
Restaurant		100 m ² of Floor Area	1.5	1.8	1.5	2.2	1.7	2.0
Retail	> 10,000 m ²	100 m ² of Floor Area	0.5	0.7	0.5	0.8	0.6	0.7
	< 10,000 m ²		0.6	0.8	0.6	0.9	0.7	0.8
Hotel		Dwelling Unit	0.3	0.4	0.3	0.6	0.4	0.4
Hospital		100 m ² of Floor Area	1.2	1.2	1.2	1.3	1.3	1.4
Exhibition Hall		100 m ² of Floor Area	0.3	0.5	0.3	0.7	0.9	0.8
Cinema		100 Seat	4.0	5.5	4.0	10.0	8.0	12.0
Theater		100 Seat	4.0	5.5	4.0	10.0	8.0	12.0

北京市地方标准 **DB**

编 号: DB11/T 1813—2020

备案号: Jxxxx—202x

公共建筑机动车停车配建指标

Parking requirement standard for auto of public buildings

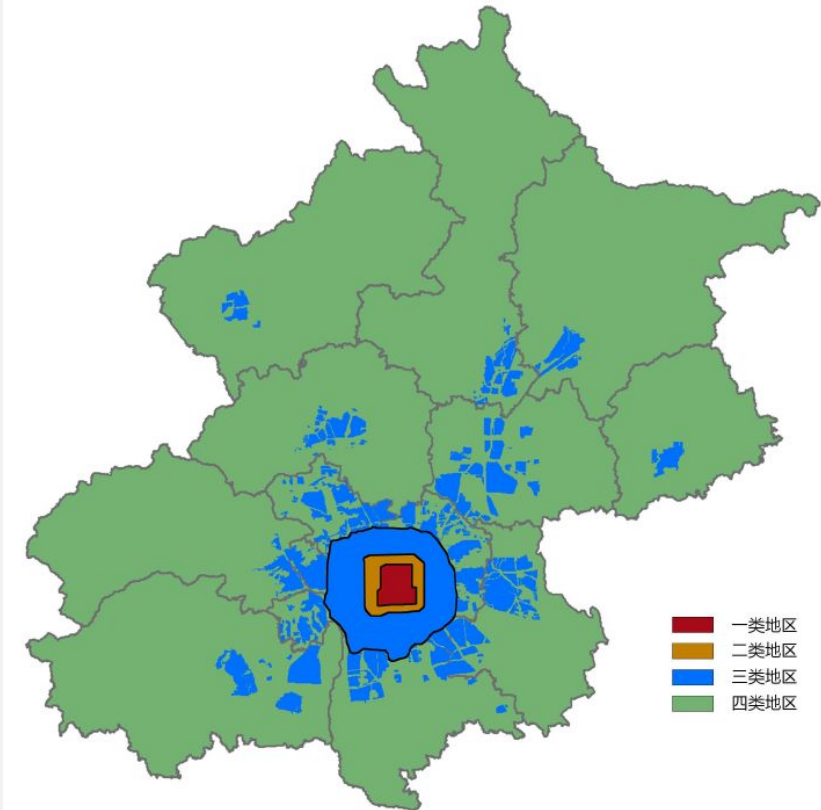
(报批稿)

2020-12-22 发布

2021-04-01 实施

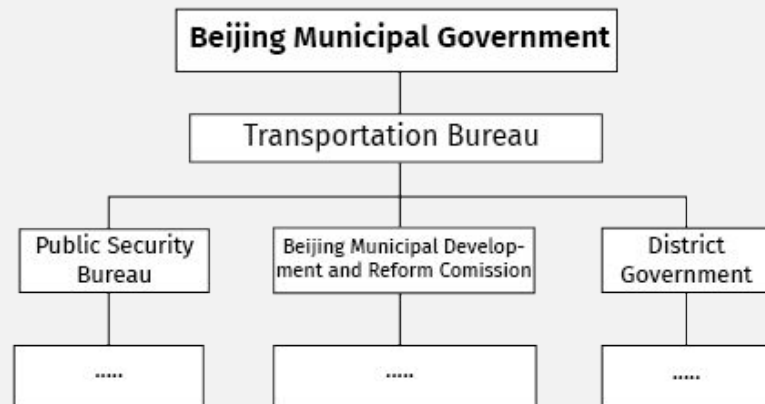
北京市规划和自然资源委员会
北京市市场监督管理局

联合发布



Institutional Changes

Parking Enforcement



Beijing Parking Management System from 2018 to now



北京市公安局公安交通管理局
Beijing Traffic Management Bureau

本站查询 ▾ 请输入搜索关键字 🔍

个人用户中心 智能问答
繁体/简 移动版 无障碍

首页 政务公开 政务服务 政民互动 安全出行

您现在的位置: 首页 > 政务公开 > 政策法规 > 法规规章

北京市机动车停车条例

时间: 2018年05月23日 字号: [大 中 小] 打印

(2018年3月30日北京市第十五届人民代表大会常务委员会第三次会议通过)

市交通行政主管部门统筹本市机动车停车管理工作, 会同相关部门对各区停车管理工作进行综合协调、检查指导、督促考核, 组织制订、宣传贯彻停车管理相关政策、标准和服务规范。

第四十二条 乡镇人民政府、街道办事处确定的停车监督、管理人员, 以及受委托专业化停车企业人员应当协助公安机关交通管理部门维护道路停车秩序, 劝阻、告知道路停车违法行为。

Thank you!

::: www.itdp-china.org ::: @ITDP-China :::