



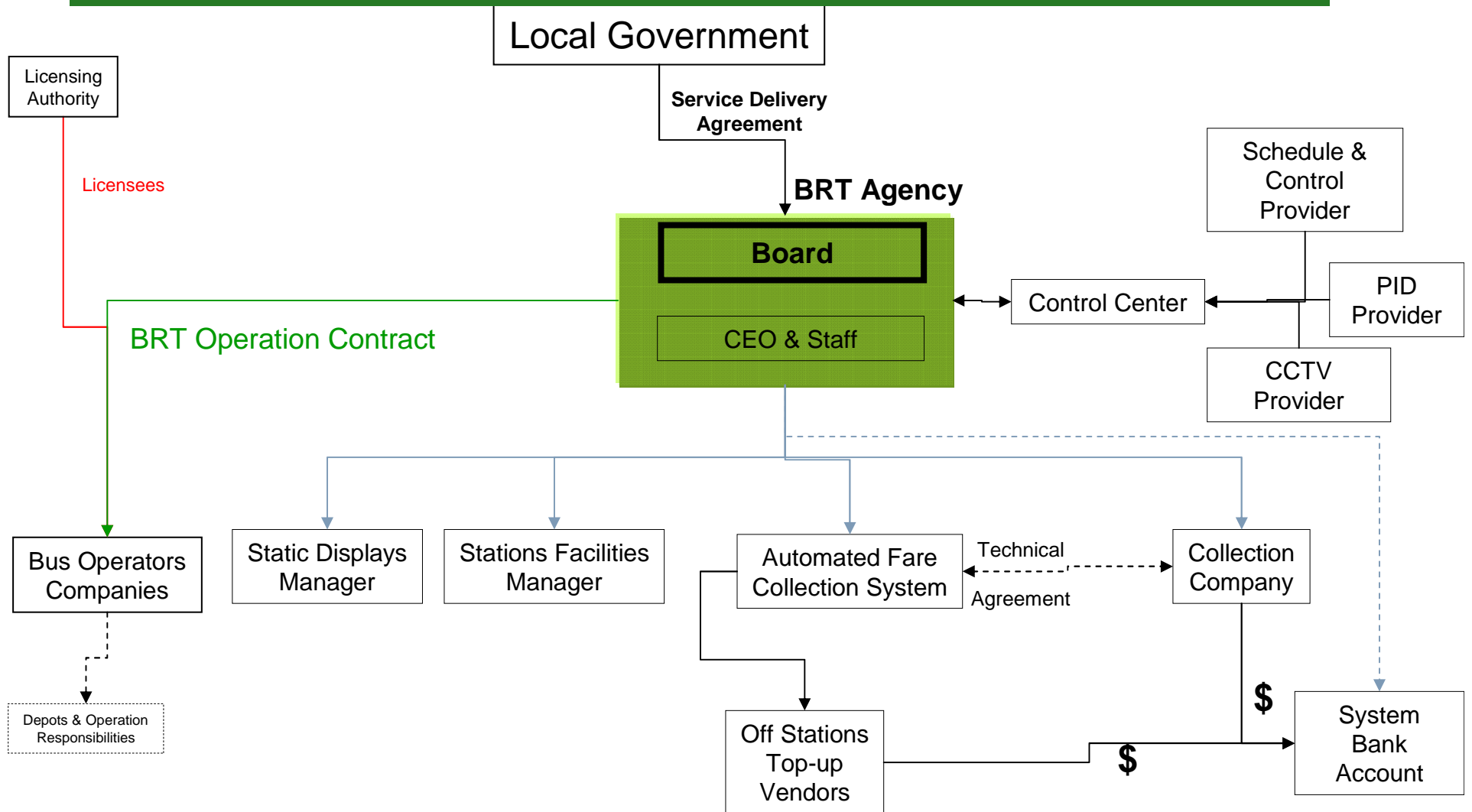
# Beyond TransMilenio Institutional Structure



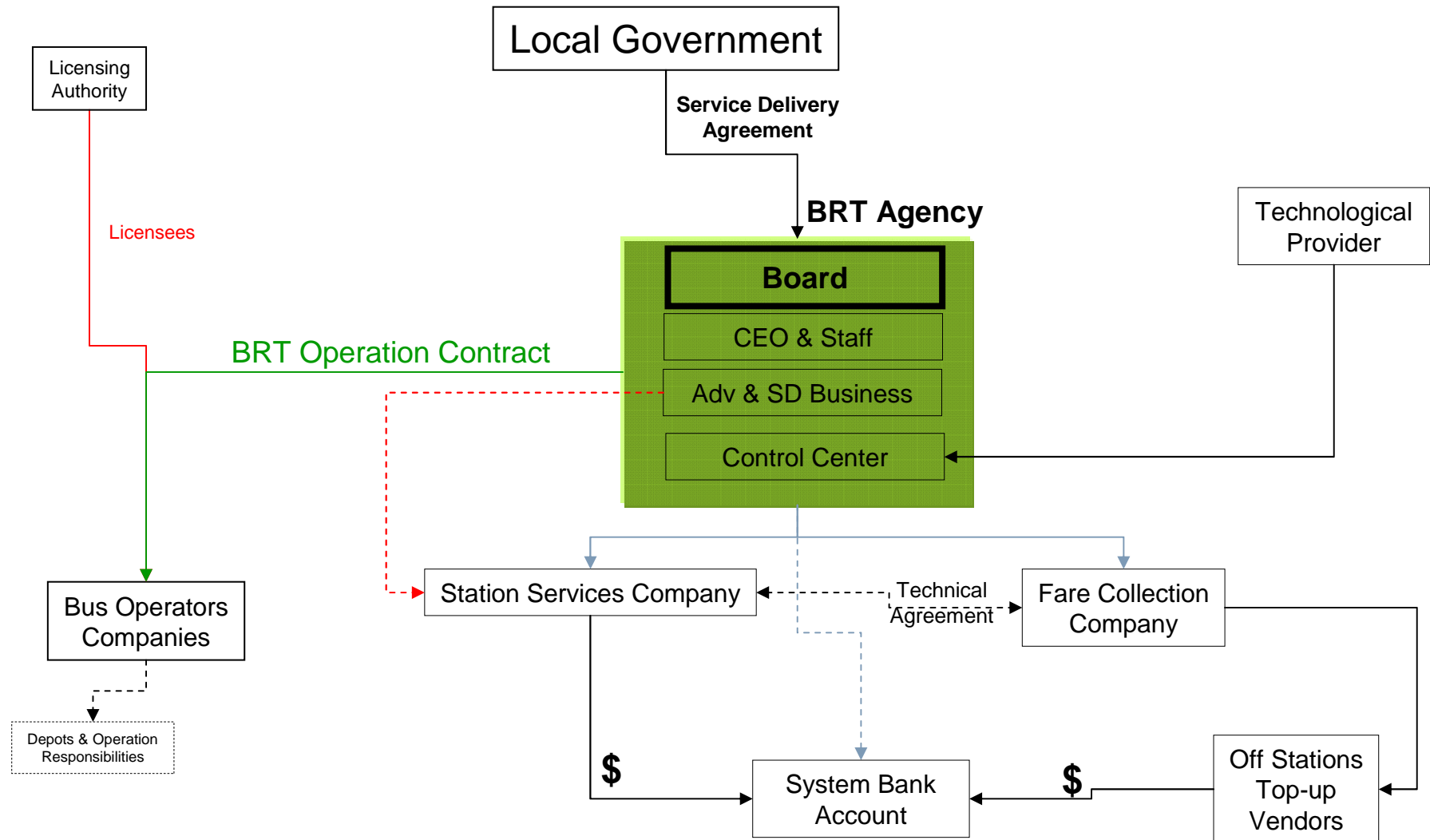
**Edgar Enrique Sandoval**

México, September 30 of 2008

# Institutional, Operational & Business BRT Structure Multiple Contracts Option



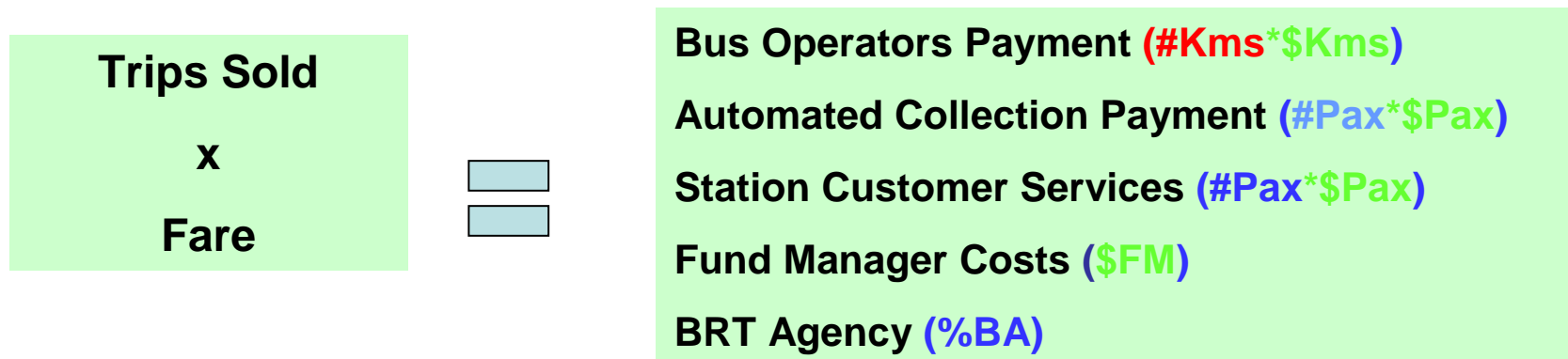
# Institutional, Operational & Business BRT Structure Streamlined Contracts Option



# Self Sustainability and Technical Fare and in TM

**Self sustainability is: Revenues = System Expenditures**

**Sold Trips x Fare = Payments to the Players**



**Technical Fare = Payments to the Players / Sold Trips (Pax)**

**The question is: Who defines the items to include in the Revenues and in the Expenditures**

## Self Sustainability and Technical Fare

**Technical Fare = “Payments to the Players” / Sold Trips (Pax)**

**“Technical Fare” = “Payments to the Players” / Sold Trips (Pax)**

**Self sustainability is: Technical Fare = User Fare**

**or**

**Self sustainability is: “Technical Fare” = User Fare**


# Self Sustainability and Technical Fare and in TM

## Beyond TM

	Capital Investment			Operation		
	Public Funds	Private Funds	Fare	Service	Maintenance	Depreciation
<b>Infrastructure</b>						
Roads	Red				Red	Red
Terminal & Stations	Red	Blue		Green	Red	Red
Depots	Red			Green	Green	Red
<b>Fleet</b>						
Buses	Red		Green	Green	Green	Green
Workshop Tools			Green		Green	Green
Over Supply - Old Buses	Red					
<b>Fare Collection</b>						
Hardware	Red			Green		Red
Software	Red			Green		Red
Payment Media	Red		Green	Green		
<b>BRT Agency</b>						
Control Centre	Red			Red	Red	Red
Staff	Red			Red	Red	

## TransMilenio

	Capital Investment			Operation		
	Public Funds	Private Funds	Fare	Service	Maintenance	Depreciation
<b>Infrastructure</b>						
Roads	Red				Red	Red
Terminal & Stations	Red			Green	Green	Red
Depots	Red			Green	Green	Red
<b>Fleet</b>						
Buses			Green	Green	Green	Green
Workshop Tools			Green		Green	Green
Over Supply - Old Buses			Green			
<b>Fare Collection</b>						
Hardware			Green	Green	Green	
Software			Green	Green	Green	
Payment Media			Green	Green	Green	
<b>BRT Agency</b>						
Control Centre	Red			Green	Green	Red
Staff			Green	Green	Green	

 Elements of the Technical Fare



# Thank you